



complete
solutions
for oral
surgery

VOLUTION **IMPLANT SYSTEMS**

RELIABLE, EFFICIENT, SAFE



ISS
GROUP
DENTAL INTELLIGENCE

iRES
Stoiletech



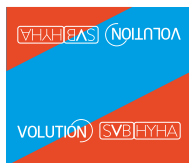
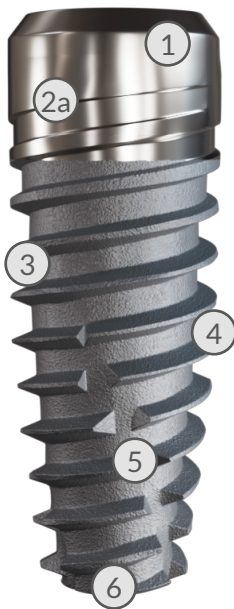
VOLUTION

BETTER INSERTION FACILITY

LARGE DOUBLE THREAD IMPLANT

| ∅ | Implant thread | Connection | Platform | Hex | Thread |
|------------------------|----------------------------|--------------|----------|--------|--------|
| 3.3 | Large double thread 0.9 mm | Internal hex | 3.2 mm | 2.1 mm | 1/72 |
| 3.75 - 4.1 - 4.7 - 5.2 | | | 3.5 mm | 2.5 mm | |

| ∅ 3.3 (h) | ∅ 3.75 (h) | ∅ 4.1 e ∅ 4.7 (h) | ∅ 5.2 (h) |
|-------------------------|-------------------------|-------------------------------|--------------------------|
| 8 10 11.5 13 16 | 8 10 11.5 13 16 | 6.5 8 10 11.5 13 16 | 6.5 8 10 11.5 13 |



SVB-HYHA

Hybrid
3 mm machined
implant

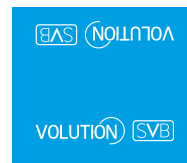
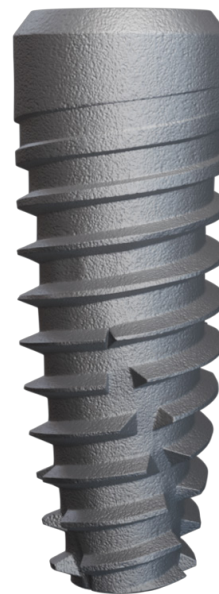
170,00



SVB-C

Neck Machined
1 mm machined
implant

140,00



SVB

Complete surface
treatment on the
body implant

165,00

1. Platform switching

2a. 3 mm machined implant

2b. 1 mm machined neck

3. Implant with ogival design (bullet type)

4. Pronounced spires with cutting profile with 10° and 20°. Higher primary stability

5. 2 spiral counter-unload furrows

6. Tip with self-perforating auger design with grinding effect

DRIVERS

Material Surgical steel



| Description | Code | Code |
|-------------|--------|--------|
| h 25 mm | HDH21S | HDH25S |



| Description | Code | Code |
|-------------|--------|--------|
| h 25 mm | HDH21L | HDH25L |

SURGICAL SCREWS

provided with the implant, available as spare parts | Material TI-6Al-4V

Ø 3.2 mm
thread 1/72

15.00 €



S1BNCS

Ø 5 mm
thread 1/72

15.00 €



S1BNCSL

PROSTHETIC SCREWS

Maximum screwing torque 30 Ncm | Material TI-6Al-4V

For abutments
thread 1/72

15.00 €



S1BRS1

For comp MUA
thread 1/72

15.00 €



S1BRS2

Long for
transfer
thread 1/72

15.00 €



S1BDTRS

Prosthetic
screws torx

15.00 €



S1BRS1T6

HEALING SCREWS

Material TI-6Al-4V

Ø 3.5 mm

25.00 €



S1BN35 [xx] HC

| Code | h (mm) |
|------------|--------|
| S1BN3530HC | 3 |
| S1BN3545HC | 4.5 |
| S1BN3560HC | 6 |

With flared
profile
Ø 3.5 mm

25.00 €



S1BN35 [xx] HCC

| Code | h (mm) |
|-------------|--------|
| S1BN3510HCC | 1 |
| S1BN3530HCC | 3 |
| S1BN3545HCC | 4.5 |
| S1BN3560HCC | 6 |

ANALOG

Material TI-6Al-4V

Analog

21.00 €



S1BNIA

Short analog
for guided
surgery

21.00 €



S1BNIAS

Digital
analog

21.00 €



S1BNDIA

DIGITAL SCAN ABUTMENT

S1BRS1 screw included | Material TI-6Al-4V

Digital scan
abutment

55.00 €



S1BNSA

INDIRECT IMPRESSION TRANSFER

* ITC and S1BRS1 screw included | ** S1BRS1 screw included | Material TI-6Al-4V

Ø 3.5 mm
Indirect
transfer cap
included

65.00 €



S1BN135ITC *

Indirect
transfer cap

20.00 €



ITC

Multifunction
abutment
Ø 3.5 mm

55.00 €



S1BN1A35 **

Multifunction
abutment
Ø 3.5 mm
with flared
profile

65.00 €



S1BN1M35 **

DIRECT IMPRESSION TRANSFER

*S1BDTRS screw included | Material TI-6Al-4V

Ø 3.5 mm

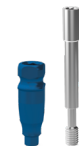
35.00 €



S1BN1A35L *

Multifunction
abutment
Ø 3.5 mm

55.00 €



S1BN1M35L *

Multifunction
abutment
Ø 3.2 mm

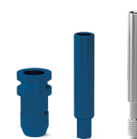
55.00 €



S1BN1M35L *

3-components
for disparallel
systems
Ø 5 mm

45.00 €



S1BN1M35L *

TEMPORARY STRAIGHT ABUTMENTS

S1BRS1 screw included

PEEK
Ø 3.5 mm

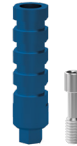
55.00 €



S1BN135PP

Anti rotation
TI-6Al-4V
Ø 3.5 mm

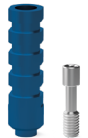
45.00 €



S1BN135P

Rotating
TI-6Al-4V
Ø 3.5 mm

45.00 €



S1BN135PR

DEFINITIVE STRAIGHT ABUTMENTS | ANATOMIC

S1BRS1 screw included | Material TI-6Al-4V

Friction Fit
Ø 3.5 mm

65.00 €



S1BN135FF

Anatomic
without
Friction Fit
Ø 4 mm

55.00 €

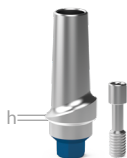


S1BN1 [x] 40

| Code | h (mm) |
|----------|--------|
| S1BN1140 | 1 |
| S1BN1340 | 3 |

Anatomic with
Friction Fit
Ø 4 mm

65.00 €



S1BN1 [x] 40F

| Code | h (mm) |
|-----------|--------|
| S1BN1140F | 1 |
| S1BN1340F | 3 |

Abutments
for welded
technique

55.00 €



S1BN1TS

T-BASE

*S1BRS1 screw included | **S1BRS1 and S1BRS1T6 screw included | Material Ti-6Al-4V

IMPLANT LIBRARIES AVAILABLE ON THE SITE <https://it.ires.dental/media-kit/>

Friction Fit
with emergence
profile
Ø 3.5 mm

65.00 €



S1BN135F*

Rotating
with emergence
profile
Ø 3.5 mm

55.00 €



S1BN135R*

Friction Fit
without
emergence
profile
Ø 3.5 mm

65.00 €



S1BN135FS*

Rotating
without
emergence
profile
Ø 3.5 mm

55.00 €



S1BN135RS*

Not rotating
Ø 3.7 mm
Cuff 0.8 mm
Shoulder
0.4 mm

75.00 €



S1BN11DCTB**

Not rotating
Ø 3.7 mm
Cuff 1.8 mm
Shoulder
0.4 mm

75.00 €



S1BN12DCTB**

Not rotating
Ø 3.7 mm
Cuff 2.8 mm
Shoulder
0.4 mm

75.00 €



S1BN14DCTB**

Not rotating
Ø 4.5 mm
Cuff 1.8 mm
Shoulder
0.8 mm

75.00 €



S1BN12DCTB50**

Not rotating
Ø 4.5 mm
Cuff 2.8 mm
Shoulder
0.8 mm

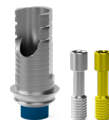
75.00 €



S1BN14DCTB50**

Rotating
Ø 3.7 mm
Cuff 0.8 mm
Shoulder
0.4 mm

75.00 €



S1BN11DCTBR**

Rotating
Ø 3.7 mm
Cuff 1.8 mm
Shoulder
0.4 mm

75.00 €



S1BN12DCTBR**

Rotating
Ø 3.7 mm
Cuff 2.8 mm
Shoulder
0.4 mm

75.00 €



S1BN14DCTBR**

Rotating
Ø 4.5 mm
Cuff 1.8 mm
Shoulder
0.8 mm

75.00 €



S1BN12DCTB50R**

Rotating
Ø 4.5 mm
Cuff 2.8 mm
Shoulder
0.8 mm

75.00 €



S1BN14DCTB50R**

Not rotating
Cerec shape

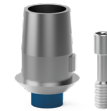
65.00 €



S1BN1DTBC*

Rotating
Cerec shape

65.00 €



S1BN1DTBCR*

ANATOMIC DEFINITIVE ANGLED ABUTMENTS

S1BRS2 screw included | Material TI-6Al-4V

Without
Friction Fit
15°
Ø 4 mm

65.00 €



S1BN2 [x] 1540

| Code | h (mm) |
|------------|--------|
| S1BN211540 | 1 |
| S1BN231540 | 3 |

Without
Friction Fit
25°
Ø 4 mm

65.00 €



S1BN2 [x] 2540

| Code | h (mm) |
|------------|--------|
| S1BN212540 | 1 |
| S1BN232540 | 3 |

Friction Fit
15°
Ø 4 mm

75.00 €



S1BN2 [x] 1540F

| Code | h (mm) |
|-------------|--------|
| S1BN211540F | 1 |
| S1BN231540F | 3 |

Friction Fit
25°
Ø 4 mm

75.00 €



S1BN2 [x] 2540F

| Code | h (mm) |
|-------------|--------|
| S1BN212540F | 1 |
| S1BN232540F | 3 |

CASTABLE ABUTMENTS

S1BRS1 screw included

Gold base
POM-C /
AU&PGM
Ø 4.5 mm

110.00 €



S1BN3GA35 *

POM-C
Ø 3.5 mm

29.00 €



S1BN3PC35

Rotating
POM-C
Ø 3.5 mm

29.00 €



S1BN3PCR35

Titanium base
TI-6Al-4V

75.00 €



S1BN3PTC45

*Gold alloy AU60% PD15% PT24,9% IR0,1% AU e PGM100%. Melting range C° 1350/1460 Tensile modulus GPa 110. Elastic limit MPa 450-720. Stretching %18-12. Breaking load MPa 580-810. Vickers hardness HV5/30 105-205-230.

STRAIGHT MUA ABUTMENTS

Mounter included | Material TI-6Al-4V

Ø 5 mm

55.00 €



S1BN4 [*]

| Code | h (mm) |
|--------|--------|
| S1BN41 | 1 |
| S1BN42 | 2 |
| S1BN43 | 3 |
| S1BN44 | 4 |
| S1BN45 | 5 |
| S1BN46 | 6 |

For MUA prosthetic components visit page 66
Tighten with HDH20 driver (page 80)

ANGLED MUA ABUTMENTS

Mounter and S1BRS2 screw included | Material TI-6Al-4V

18°
Ø 5 mm
h 0/2 mm

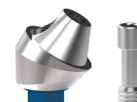
85.00 €



S1BN518

30°
Ø 5 mm
h 0/2 mm

85.00 €



S1BN532

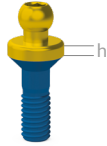
For MUA prosthetic components visit page 66

BALL ABUTMENTS

Cah e Calt included | TIN Treatment on the gold part | Material TI-6Al-4V

Ø 4 mm

45.00 €



S1BN6 [X]

| Code | h (mm) |
|--------|--------|
| S1BN61 | 1 |
| S1BN62 | 2 |
| S1BN63 | 3 |
| S1BN64 | 4 |
| S1BN65 | 5 |

Containment ring *

15.00 €

Nylon containment cap *

7.50 €



CAH



CALT

Tighten with MDS (page 81) or MDL (page 81) screwdriver

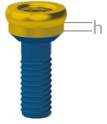
* Can also be sold separately as spare parts

iRETOR (Ring and cap not included)

TIN Treatment on the gold part

TIN

95.00 €



S1BN8 [XX]

| Code | h (mm) |
|---------|--------|
| S1BN80 | 0 |
| S1BN81 | 1 |
| S1BN825 | 2.5 |
| S1BN835 | 3.5 |
| S1BN845 | 4.5 |
| S1BN865 | 6.5 |

Tighten with 8393 screwdriver (page 81)

For accessories and caps visit page 68

SURGICAL SCREWS

provided with the implant, available as spare parts | Material TI-6Al-4V

Ø 3.5 mm
thread 1/72

15.00 €



S1BCS

Ø 5 mm
thread 1/72

15.00 €



S1BCSL

PROSTHETIC SCREWS

Maximum screwing torque 30 Ncm | Material TI-6Al-4V

For abutment
thread 1/72

15.00 €



S1BRS1

For MUA
thread 1/72

15.00 €



S1BRS2

Long for
transfer
thread 1/72

15.00 €



S1BDTRS

Torx screw
for digital

15.00 €



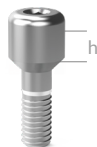
S1BRS1T6

HEALING SCREWS

Material TI-6Al-4V

Ø 3.5 mm

25.00 €



S1B35 [x] HC

| Code | h (mm) |
|-----------|--------|
| S1B3530HC | 3 |
| S1B3545HC | 4.5 |
| S1B3560HC | 6 |

Ø 5 mm

25.00 €



S1B50 [x] HC

| Code | h (mm) |
|-----------|--------|
| S1B5030HC | 3 |
| S1B5045HC | 4.5 |
| S1B5060HC | 6 |

HEALING SCREWS with FLARED PROFILE

Material TI-6Al-4V

Ø 3.5 mm

25.00 €



S1B35 [xx] HCC

| Code | h (mm) |
|------------|--------|
| S1B3530HCC | 3 |
| S1B3545HCC | 4.5 |
| S1B3560HCC | 6 |

Ø 5 mm

25.00 €



S1B50 [xx] HCC

| Code | h (mm) |
|------------|--------|
| S1B5030HCC | 3 |
| S1B5045HCC | 4.5 |
| S1B5060HCC | 6 |

Ø 6 mm

30.00 €



S1B60 [xx] HCC

| Code | h (mm) |
|------------|--------|
| S1B6030HCC | 3 |
| S1B6045HCC | 4.5 |
| S1B6060HCC | 6 |

ANALOG

Material TI-6Al-4V

Analog

21.00 €



S1BIA

Short
for guided
surgery

21.00 €



S1BIAS

Digital
analog

21.00 €



S1BDIA

DIGITAL SCAN ABUTMENT

S1BRS1 screw included | Material TI-6Al-4V

Digital scan
abutment

55.00 €



S1BSA

INDIRECT IMPRESSION TRANSFER

*ITC and S1BRS1 screw included | **S1BRS1 screw included | Material TI-6Al-4V

Ø 3.5 mm

65.00 €



S1B135ITC *

Indirect
transfer cap

20.00 €



ITC

Ø 5 mm

65.00 €



S1B150ITC *

Multifunction
abutment
Ø 5 mm

55.00 €



S1B1A50 **

DIRECT IMPRESSION TRANSFER

* S1BDTRS screw included | ** S1BDTRS and S1BRS1 screw included | Material TI-6Al-4V

Ø 3.5 mm

35.00 €



S1BDT35 *

Ø 5 mm

35.00 €



S1BDT50 *

3-components
for disparallel
systems
Ø 5 mm

45.00 €



S1BDT503

Multifunction
abutment
Ø 5 mm

55.00 €



S1B1A50L *

Multifunction
abutment
Ø 5 mm
with flared
profile

65.00 €



S1B1M50L **

TEMPORARY STRAIGHT ABUTMENTS

S1BRS1 screw included

Rotating
TI-6Al-4V
Ø 4 mm

45.00 €



S1B140PR

Anti rotation
TI-6Al-4V
Ø 4 mm

45.00 €



S1B140P

PEEK
Ø 4 mm

55.00 €



S1B140PP

DEFINITIVE STRAIGHT ABUTMENTS | ANATOMIC

S1BRS1 screw included | Material TI-6Al-4V

Friction Fit
Ø 3.5 mm

65.00 €



S1B135F

Friction Fit
Ø 5 mm

65.00 €



S1B150F

Friction Fit
without
emergence
profile
Ø 4.5 mm

65.00 €



S1B145FS

Friction Fit
without
emergence
profile
Ø 5.5 mm

65.00 €



S1B155FS

Anatomic
without
Friction Fit
Ø 4.5 mm

55.00 €



S1B1 [*] 45

| Code | h (mm) |
|---------|--------|
| S1B1145 | 1 |
| S1B1345 | 3 |

Anatomic with
Friction Fit
Ø 4.5 mm

65.00 €



S1B1 [*] 45F

| Code | h (mm) |
|----------|--------|
| S1B1145F | 1 |
| S1B1345F | 3 |

Rotating
abutment
for welded
technique

55.00 €



S1B1TS

T-BASE

*S1BRS1 screw included | **S1BRS1 and S1BRS1T6 screw included | Material Ti-6Al-4V

IMPLANT LIBRARIES AVAILABLE ON THE SITE <https://it.ires.dental/media-kit/>

Friction Fit
with emergence
profile
Ø 4.5 mm

65.00 €



S1B140F*

Rotating
with emergence
profile
Ø 4.5 mm

55.00 €



S1B140R*

Friction Fit
without
emergence
profile
Ø 4.5 mm

65.00 €



S1B140FS*

Rotating
without
emergence
profile
Ø 4.5 mm

55.00 €



S1B140RS*

Not rotating
Ø 3.4 mm
Cuff 0 mm
Shoulder
0.4 mm

75.00 €



S1B00DCTB**

Not rotating
Ø 3.7 mm
Cuff 0.5 mm
Shoulder
0.4 mm

75.00 €



S1B11DCTB**

Not rotating
Ø 3.7 mm
Cuff 1.8 mm
Shoulder
0.4 mm

75.00 €



S1B12DCTB**

Not rotating
Ø 5.7 mm
Cuff 1.8 mm
Shoulder
1.2 mm

75.00 €



S1B14DCTB**

Not rotating
Ø 4.5 mm
Cuff 1.8 mm
Shoulder
0.8 mm

75.00 €



S1B12DCTB50**

Not rotating
Ø 5.7 mm
Cuff 2.8 mm
Shoulder
1.2 mm

75.00 €



S1B14DCTB50**

Rotating
Ø 3.4 mm
Cuff 0 mm
Shoulder
0.4 mm

75.00 €



S1B00DCTBR**

Rotating
Ø 3.7 mm
Cuff 0.5 mm
Shoulder
0.4 mm

75.00 €



S1B11DCTBR**

Rotating
Ø 3.7 mm
Cuff 1.8 mm
Shoulder
0.4 mm

75.00 €



S1B12DCTBR**

Rotating
Ø 5.7 mm
Cuff 1.8 mm
Shoulder
1.2 mm

75.00 €



S1B14DCTBR**

Rotating
Ø 4.5 mm
Cuff 1.8 mm
Shoulder
0.8 mm

75.00 €



S1B12DCTBR50**

Rotating
Ø 5.7 mm
Cuff 2.8 mm
Shoulder
1.2 mm

75.00 €



S1B14DCTBR50**

Not rotating
Cerec shape

65.00 €



S1B1DTBC

Rotating
Cerec shape

65.00 €



S1B1DTBCR

ANGLED ABUTMENTS

S1BRS2 screw included | Material TI-6Al-4V

Friction Fit
20° Ø 4.5 mm

75.00 €



S1B250F

Friction Fit
without
emergence
profile
20° Ø 4.5 mm

75.00 €



S1B245FS

ANATOMIC DEFINITIVE ANGLED ABUTMENTS

S1BRS2 screw included | Material TI-6Al-4V

Without
Friction Fit
15°
Ø 4.5 mm

65.00 €



S1B2 [x] 1545

| Code | h (mm) |
|-----------|--------|
| S1B211545 | 1 |
| S1B231545 | 3 |

Without
Friction Fit
25°
Ø 4.5 mm

65.00 €



S1B2 [x] 2545

| Code | h (mm) |
|-----------|--------|
| S1B212545 | 1 |
| S1B232545 | 3 |

Friction Fit
15°
Ø 4.5 mm

75.00 €



S1B2 [x] 1545F

| Code | h (mm) |
|------------|--------|
| S1B211545F | 1 |
| S1B231545F | 3 |

Friction Fit
25°
Ø 4.5 mm

75.00 €



S1B2 [x] 2545F

| Code | h (mm) |
|------------|--------|
| S1B212545F | 1 |
| S1B232545F | 3 |

CASTABLE ABUTMENTS

S1BRS1 screw included

POM-C
Ø 4.5 mm
29.00 €



S1B3PC45

Rotating
POM-C
Ø 4.5 mm
29.00 €



S1B3PCR45

Titanium base
TI-6Al-4V
75.00 €



S1B3PTC45

STRAIGHT MUA ABUTMENTS

Mounter included | Material TI-6Al-4V

Ø 5 mm
55.00 €



S1B4 [X]

| Code | h (mm) |
|-------|--------|
| S1B41 | 1 |
| S1B42 | 2 |
| S1B43 | 3 |
| S1B44 | 4 |
| S1B45 | 5 |
| S1B46 | 6 |

For MUA prosthetic components visit page 66
Tighten with HDH20 driver (page 80)

ANGLED MUA ABUTMENTS

Mounter and S1BRS2 screw included | Material TI-6Al-4V

18°
Ø 5 mm
h 0/2 mm
85.00 €



S1B518

30°
Ø 5 mm
85.00 €



S1B53 [X]

| Code | h (mm) |
|--------|--------|
| S1B532 | 0/2 |
| S1B534 | 2/4 |

For MUA prosthetic components visit page 66

BALL ABUTMENTS

Cah e Calt included | TIN Treatment on the gold part | Material TI-6Al-4V

Ø 4 mm

45.00 €



S1B6 [x]

| Code | h (mm) |
|-------|--------|
| S1B61 | 1 |
| S1B62 | 2 |
| S1B63 | 3 |
| S1B64 | 4 |
| S1B65 | 5 |

Containment
ring *

15.00 €

Nylon
containment
cap *

7.50 €



CAH



CALT

Tighten with MDS or MDL screwdriver (p. 81)

* Can also be sold separately as spare parts

iRETOR (Ring and cap not included)

TIN Treatment on the gold part

TIN

95.00 €

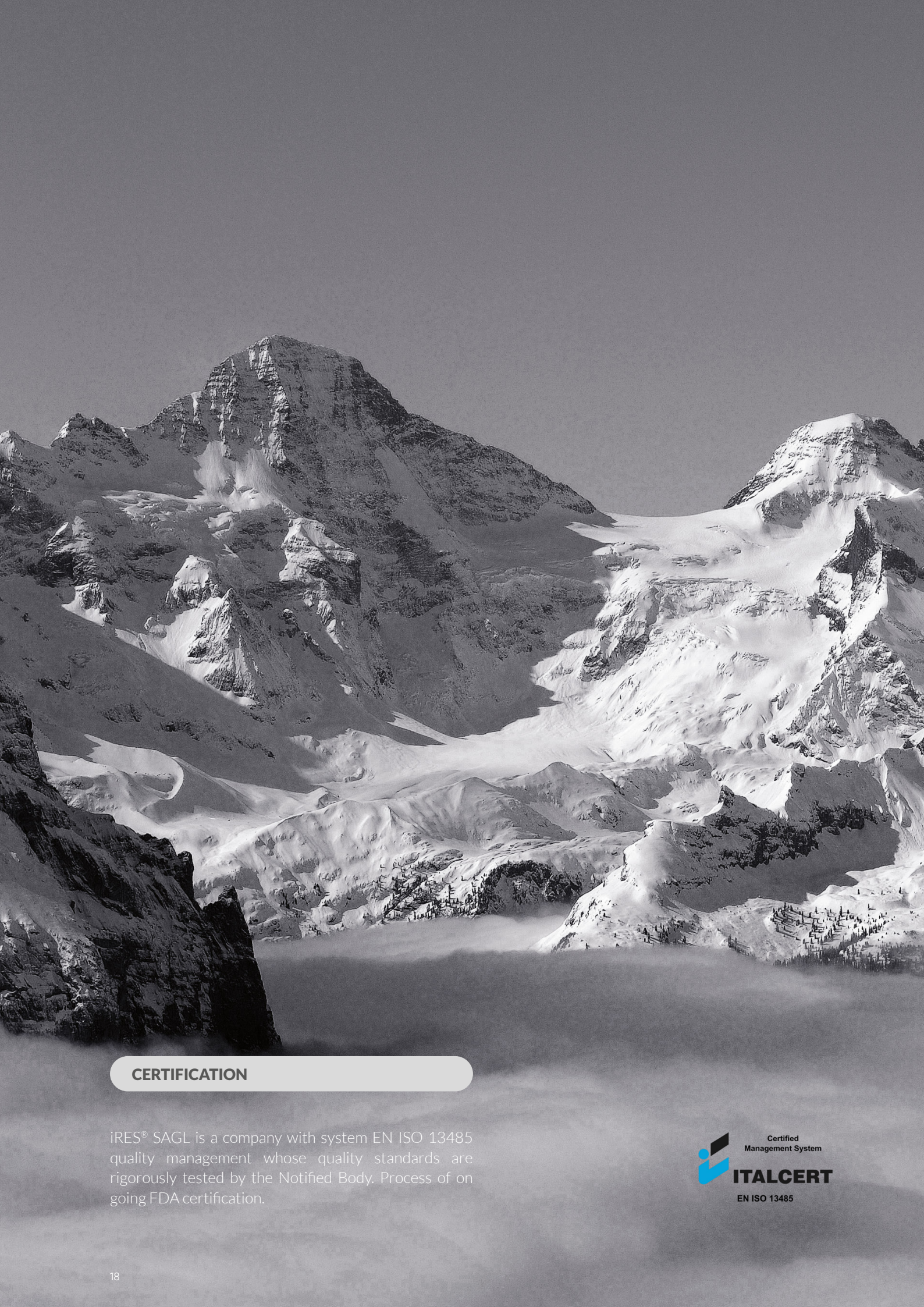


S1B8 [xx]

| Code | h (mm) |
|--------|--------|
| S1B80 | 0 |
| S1B81 | 1 |
| S1B825 | 2.5 |
| S1B835 | 3.5 |
| S1B845 | 4.5 |
| S1B865 | 6.5 |

Tighten with key 8393 (p. 81)

For accessories and caps visit page 68



CERTIFICATION

iRES® SAGL is a company with system EN ISO 13485 quality management whose quality standards are rigorously tested by the Notified Body. Process of on going FDA certification.







implant system



prosthetic solutions



continuing education



guided surgery



clear aligners

info@ires.dental | www.ires.dental | eshop.ires.dental



info@iess.dental | www.iess.dental

